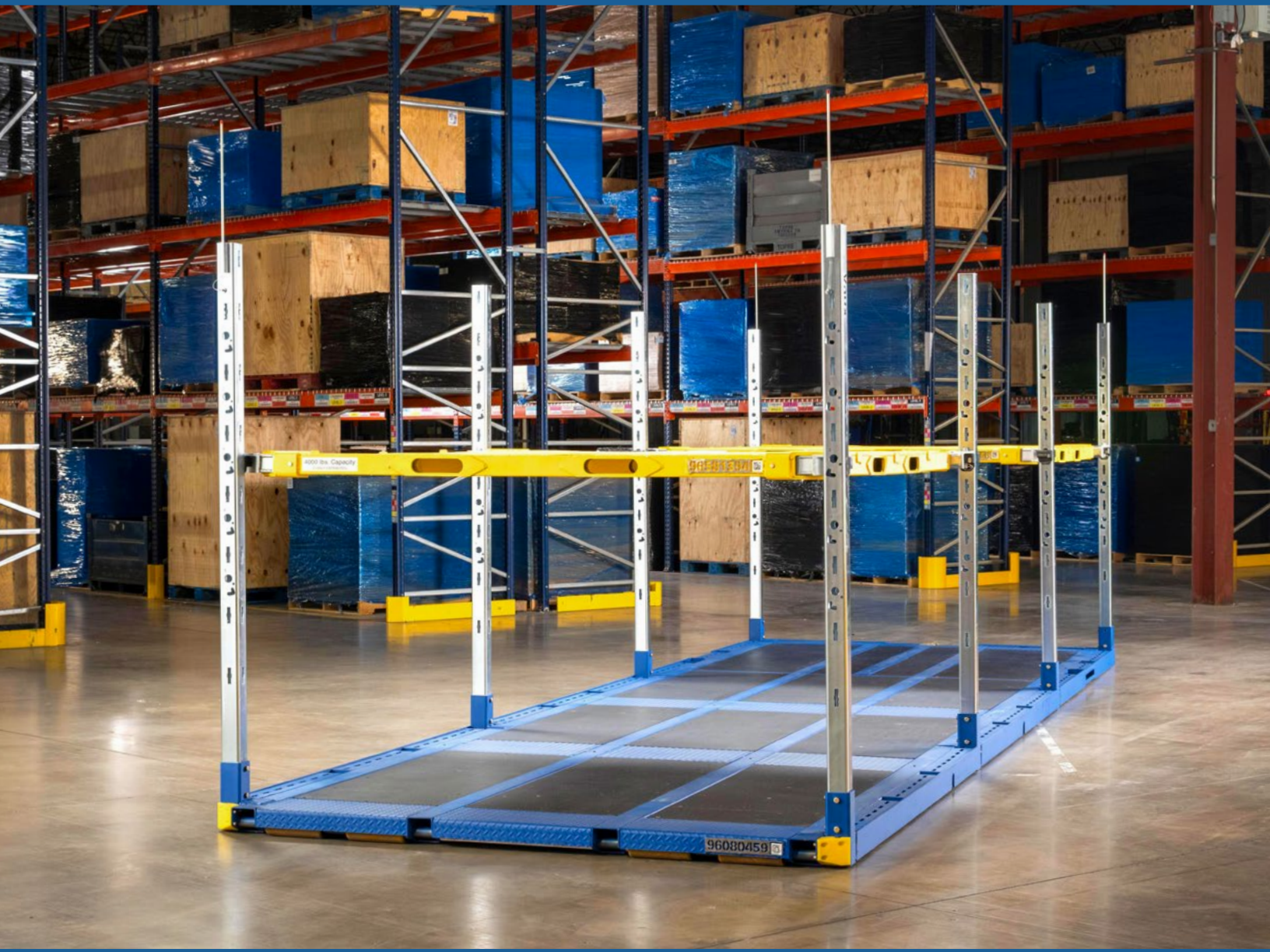


ArcBest | Vaux

Freight Movement System™

PRODUCT GUIDE



Contents

Vaux Solutions	3
The Vaux™ Technology Suite	3
Freight Movement System	4
How It Works	4
Capabilities	5
MP Equipment and Accessory Specifications	6
MP Equipment Specifications	6
MP Accessory Specifications	7
MP Coupler and Accessories	8
MP Coupler	8
MP Coupler Controller	8
MP Coupler Charger	8
92" MP Configurations	9
MP 92" (Base)	9
MP 92" Securement Only	9
MP 92" with Decking System	10
MP Utility Hauler	11
96" MP Configurations	12
MP 96" (Base)	12
MP 96" Securement Only	12
MP 96" with Decking System	13
MP 96" Compact with Decking System	14
97" MP Configurations	15
MP 97"	15
MP 97" Compact	16
MP Accessories	17
Decking Tables	17
Posts	18
Securement Beams	20
Optional Equipment	20
Key Terms	21

The Vaux™ Technology Suite

With Vaux, **intelligence drives every move** — optimizing workflows, reducing risk and unlocking new levels of performance across the supply chain. Vaux's award-winning portfolio of intelligent, connected technologies enables safer, faster and more efficient freight movement by combining automation, autonomy and real-time visibility across key operational touch points.

Vaux Smart Autonomy™

Advanced AMR forklift fleet that delivers end-to-end automation in complex operating environments, without requiring costly facility modifications.

Vaux Vision™

Real-time dimensioning and imaging for accurate freight records, fewer billing surprises, and smarter operational decisions.

Vaux Freight Movement System™

Provides the ability to stack unstackable freight for maximum load efficiency and space utilization while enabling rapid trailer loading and unloading and optimized freight staging.



Freight Movement System



HOW IT WORKS

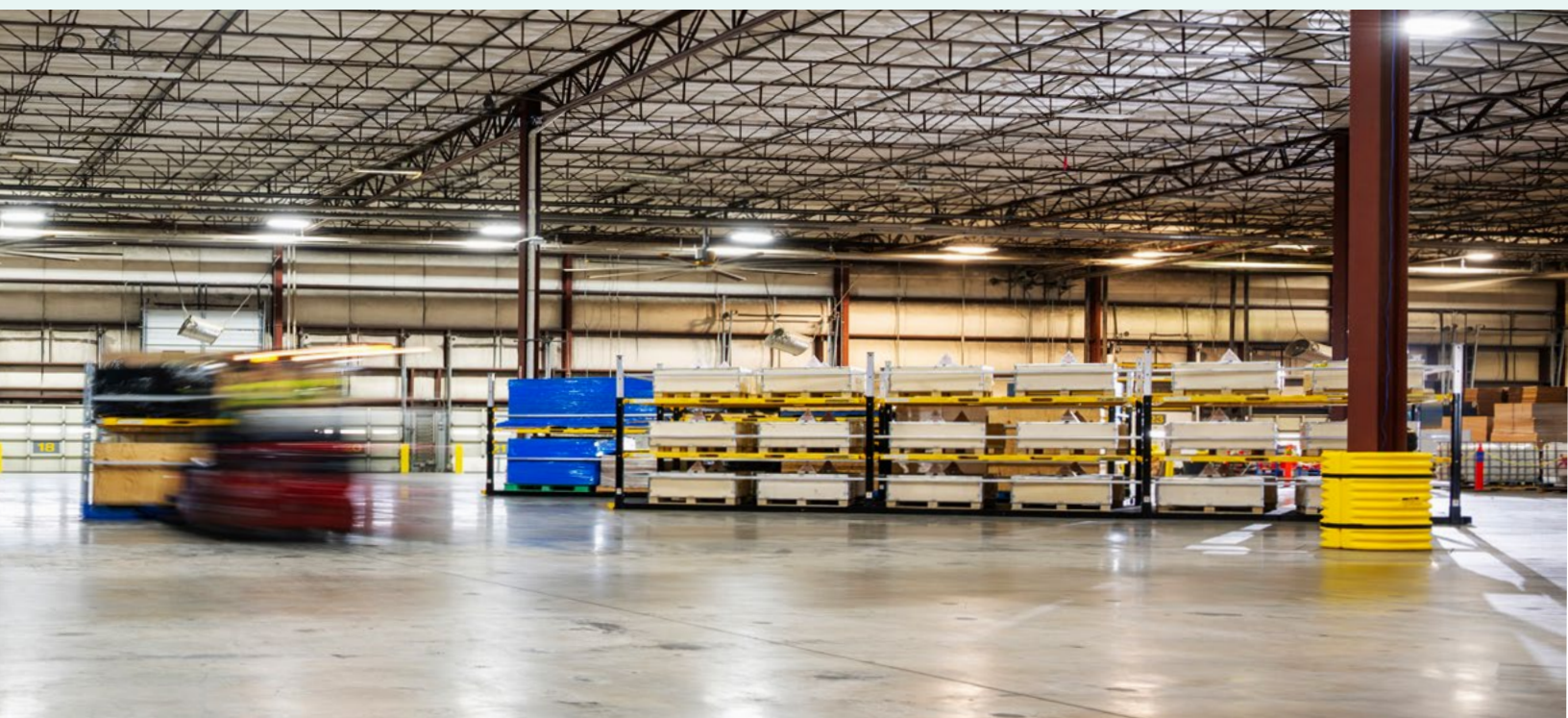
The **Vaux Freight Movement System™** transforms how freight moves in and out of trailers. Instead of loading piece by piece, the system uses patented Vaux MP™ platforms to stage freight outside the trailer and slide the entire load in with one smooth motion. A standard forklift equipped with the MP Coupler™ completes the transfer in seconds.

When it's time to unload, the process works just as quickly. The platform is pulled out in a

single movement and positioned for immediate processing. This removes the slow, repetitive cycle of traditional loading.

The Vaux MP is available in multiple sizes and types, with optional decking systems that can be configured based on your shipment needs. This allows trailers to be fully loaded, even with products that cannot be stacked — reducing the number of trucks on the road.

With the Vaux Freight Movement System, **unstackable freight becomes stackable**. Unload an entire trailer in under five minutes.





CAPABILITIES

- ✓ Highly customizable
- ✓ Can be unloaded from a trailer in one smooth motion and quickly swarm processed
- ✓ No need to make modifications to docks, trailers or forklifts
- ✓ Moved with our patented MP Coupler™ connected to a standard forklift
- ✓ Works with various trailers: roll-up, swing door, vans and pups



Vaux™ MP with Decking System

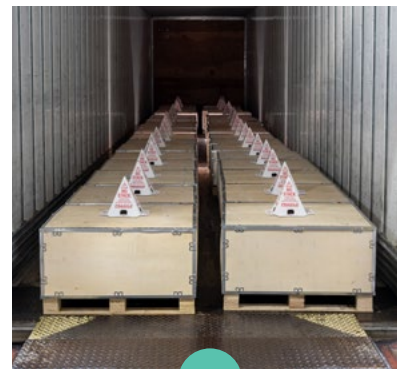
REDUCE TRANSPORTATION COSTS BY UP TO 50%

Ideal For:

- ✓ Automotive
- ✓ Tech / Data Center
- ✓ CPG Retail
- ✓ Manufacturing

BEFORE

- Unstackable freight
- Floor loading only
- Multiple freight touches
- Higher daily trailer usage



VAUX MP

- Unstackable freight becomes stackable
- Double/triple capacity per trailer
- Reduced daily trailer usage
- More sustainable carbon footprint



VS



MP Equipment and Accessory Specifications

MP Equipment Specifications

EQUIPMENT DESCRIPTION	DIMENSIONS (L x W x H)	WEIGHT
MOBILE PLATFORMS		
MP 92" with Decking System	26' x 92" x 4" (MP base)	3,600 lbs. (MP base)
	26' x 92" x 103" (assembled)	Assembled weight is configuration-specific
MP Automotive Hauler	26' x 92" x 84.25"	5,000 lbs. (assembled)
MP Utility Hauler	26' x 92" x 75"	6,055 lbs. (assembled)
MP 96" Securement-Only	26' x 96" x 4" (MP base)	3,550 lbs. (MP base)
	26' x 96" x 103" (assembled)	3,830 lbs. (assembled)
MP 96" with Decking System	26' x 96" x 4" (MP base)	3,550 lbs. (MP base)
	26' x 96" x 103" (assembled)	Assembled weight is configuration-specific
MP 96" Compact with Decking System	17' x 96" x 103" (assembled)	Assembled weight is configuration-specific
MP Roller Deck – Warehouse	26' x 96" x 4.5"	4,300 lbs.
MP Roller Deck – Trailer	26' x 96" x 4.5"	4,150 lbs.
MP 97"	26' x 97" x 4"	3,500 lbs.
MP 97" Compact	17' x 97" x 3"	2,000 lbs.
<p>NOTE: MP heights of 103" listed above are calculated with the post's vertical height indicator or post extension fully raised.</p>		
MP COUPLER		
MP Coupler (Single Cylinder)	80" x 55" x 30"	1,215 lbs. (with fluid)
MP Coupler (Dual Cylinder)	80" x 55" x 30"	1,150 lbs. (with fluid)

MP Accessory Specifications

EQUIPMENT DESCRIPTION	DIMENSIONS (L x W x H)	WEIGHT
DECKING TABLES		
92" Decking Table	91" x 90" x 3"	550 lbs.
96" Decking Table – Utility Hauler	98" x 88" x 3"	625 lbs.
96" Decking Table	98" x 88" x 3"	600 lbs.
POSTS		
92" Post with Cups	3" x 3" x 70.5"	60 lbs.
92" Post (without cups)	3" x 3" x 70.5"	44 lbs.
Cup	3.7" x 3" x 2.6"	1.7 lbs.
Post Extension (92" Post)	40.1" x 4.5" x 3.5"	8 lbs.
96" Post (without cups)	3" x 3" x 70.5"	44 lbs.
96" Post with Quick Change Cups	3" x 3" x 70.5"	50 lbs.
Quick-Change Cup	3.7" x 3" x 2.6"	2.7 lbs.
Magnetic Visual Height Indicator (for Post with Quick Change Cups)	1.25" x 1.25" x 23"	.5 lbs.
96" Securement-Only Post	2" x 2" x 87"	35 lbs.
Visual Height Indicator (for 96" Securement-Only Post)	.9" x .9" x 21"	.5 lbs.
SECUREMENT BEAMS		
Securement Beam	86" x 2" x 2"	10 lbs.
Swivel-End Securement Beam	86" x 2" x 2"	10 lbs.
OPTIONAL EQUIPMENT		
96" Ramp	96" x 36.25" x 4"	350 lbs.
MP Roller Deck – Transfer Plate	97.75" x 60" x 5.5"	477 lbs.

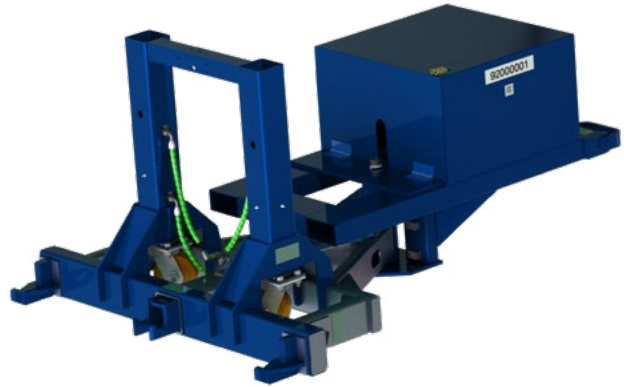
MP Coupler and Accessories

MP Coupler

The MP Coupler is a patented device that connects to a standard forklift to move MPs in and out of trailers and around a warehouse.

- The Coupler's Controller and remote MP Coupler Controller enable operation

Dimensions	80" x 55" x 30"
Weight (single cylinder)	1,215 lbs. (with fluid)
Weight (dual cylinder)	1,150 lbs. (with fluid)

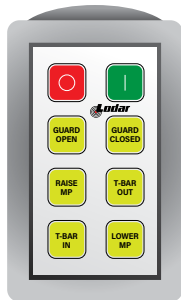


MP Coupler Controller

MP Coupler Controller allows the operator to control the Coupler from the forklift.

- Maximum controller range is 200 feet.

NOTE: Specific environmental factors or equipment may impact range of use.



MP Coupler Charger

The MP Coupler charger is a 12" x 12" x 6" box with a 6-foot, 6-inch charging cable.

- Plugs into a 110-volt outlet

Length of Power Cord	6 feet
Weight	10 lbs.



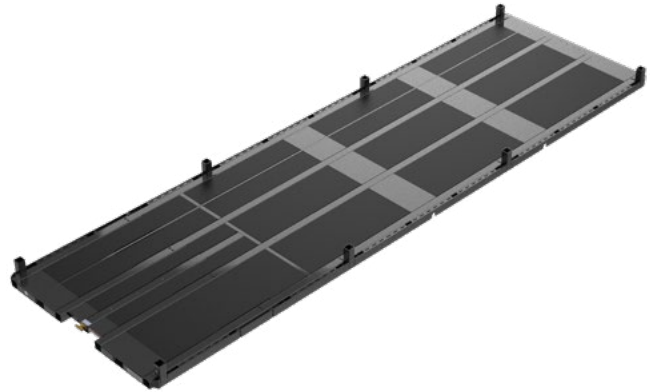
92" MP Configurations (ROLL DOOR OR SWING DOOR COMPATIBLE)

MP 92" (Base)

The MP 92" (base) features 16 built-in rollers activated by a T-Bar when connected to the MP Coupler.

- Has eight post pockets for post placement, allowing for multiple configurations

Dimensions	26' x 92" x 4"
Weight	3,600 lbs.



MP 92" Securement Only

The securement-only system utilizes the MP 92" base stub-up pocket locations for post placement and securement.

- With additional securement, straps and beams, the system can provide multiple configuration options to secure freight directly on the MP

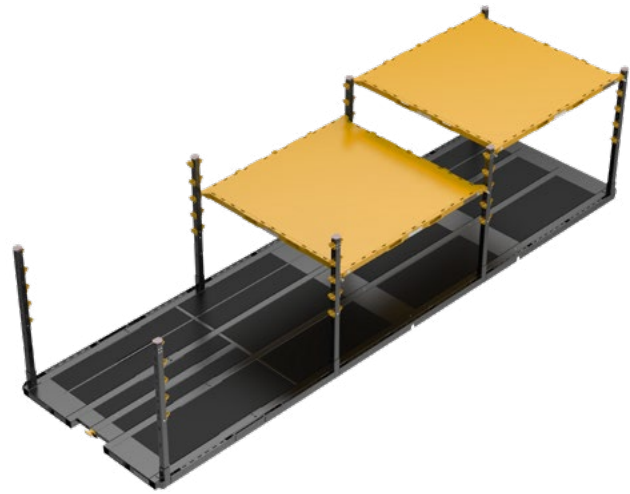
Dimensions (raised post extensions)	26' x 92" x 103"
Weight (MP base)	3,600 lbs.
Assembled Weight	4,000 lbs.



MP 92" with Decking System

The decking system is supported on the MP 92" base and can be designed to fit multiple freight profiles and configurations.

- Assembled (as shown) with eight posts and allows for multiple tables — the system has five height locations and three bay locations to load and secure freight
- Makes unstackable freight stackable



Dimensions
(raised post extensions)

26' x 92" x 103"

Weight
(MP Base)

3,600 lbs.

Assembled Weight
(as shown)

5,180 lbs.



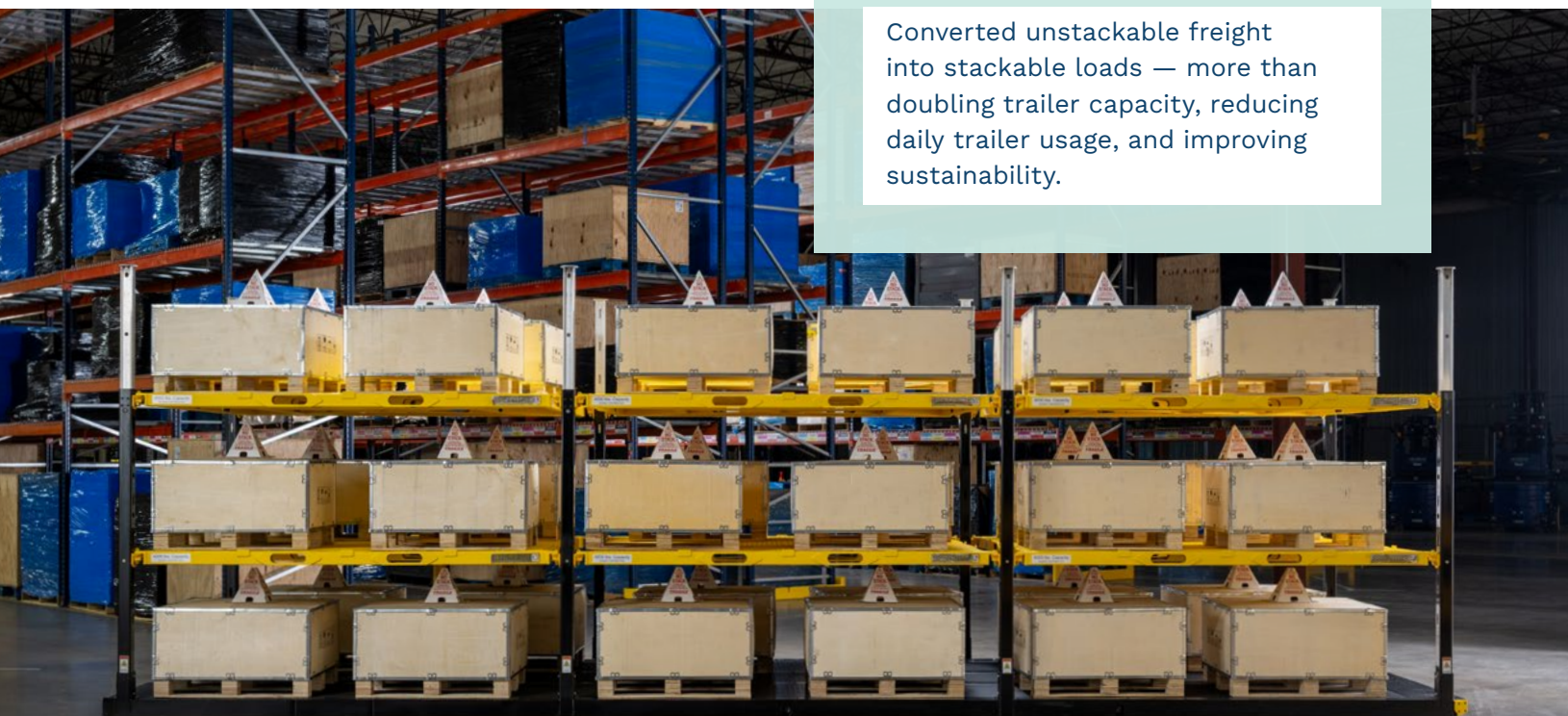
CHALLENGE SOLVED

CUSTOMER PROFILE:

Tech Industry (high-value servers)

RESULTS:

Converted unstackable freight into stackable loads — more than doubling trailer capacity, reducing daily trailer usage, and improving sustainability.

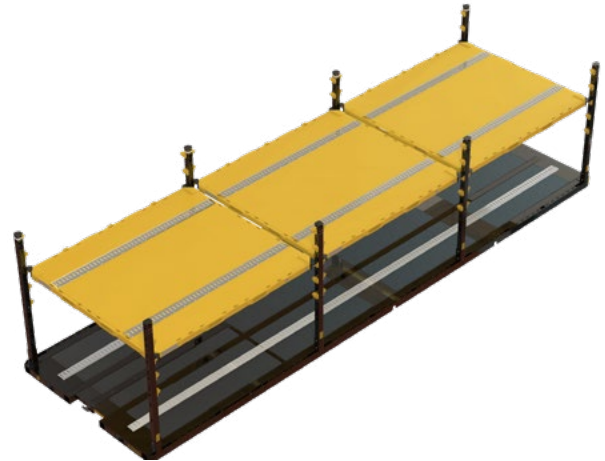


MP Utility Hauler

The Utility Hauler is configured with an MP 92" base featuring e-track rails for securing and hauling multiple wheeled vehicles.

- Intermodal ready for hauling ATV/UTV/mowers
- Utilizes eight posts with cups to support decking tables

Dimensions	26' x 92" x 75"
Weight (MP base)	3,700 lbs.
Assembled Weight (as shown)	6,055 lbs.



CUSTOMER WIN

"ArcBest did a great job implementing a unique solution to CFMOTO. We were setting up our first operation in Mexico, and they came to us with a unique and efficient solution with the Vaux Mobile Platform. The Vaux MP has been a real game changer for us."

– JIM OSTERBERG,
VP-ENTERPRISE OPERATIONS,
CFMOTO POWER SPORTS



96" MP Configurations

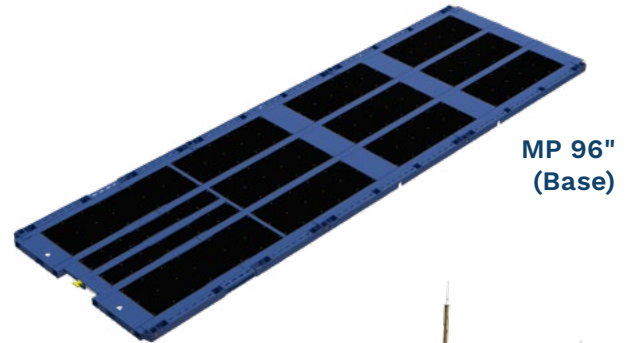
(SWING DOOR COMPATIBLE)

MP 96" (Base)

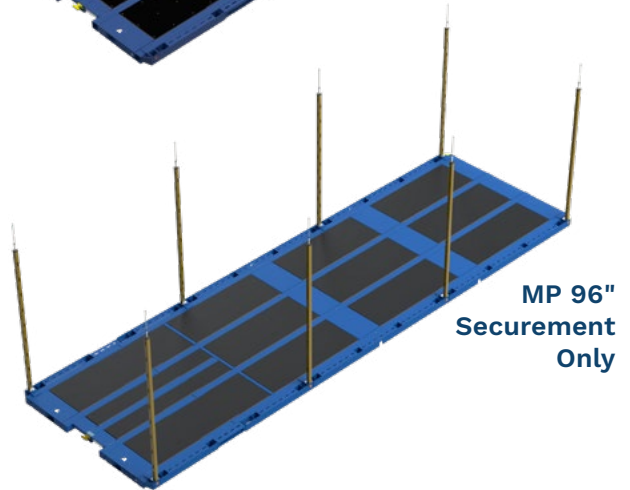
The MP 96" is a flat-top base featuring 16 built-in rollers activated by a T-Bar when connected to the MP Coupler.

- Features eight post pockets for post placement, allowing for multiple freight configurations

Dimensions	26' x 96" x 4"
Weight	3,550 lbs.



MP 96"
(Base)



MP 96"
Securement
Only

MP 96" Securement Only

The securement-only system is supported by the MP 96" base to place and secure freight directly on the MP.

- Requires additional straps and securement beams to secure freight
- Features smaller profile securement-only posts to maximize cube utilization

Dimensions (with visual height indicators)	26' x 96" x 103"
Weight (MP base)	3,550 lbs.
Assembled Weight (as shown)	3,830 lbs.

CHALLENGE SOLVED

CUSTOMER PROFILE:

Leading Retailer

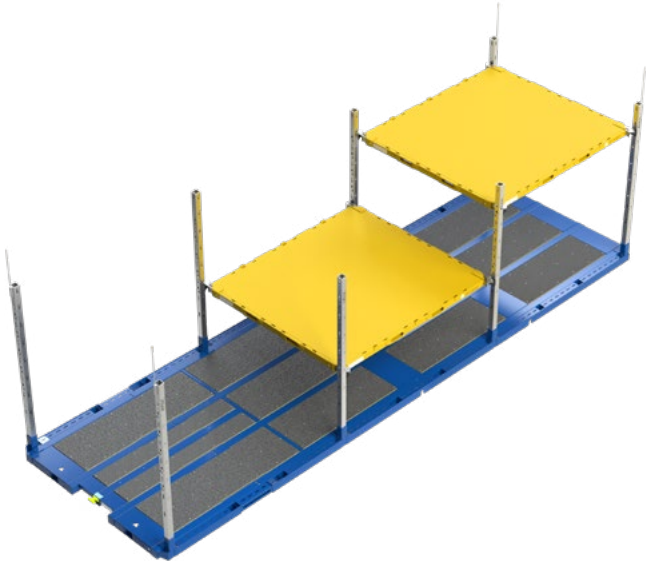
RESULTS:

50% reduction in damage, minimized handling and cut labor costs per load by 43%. They were able to cut trailer loading/unloading time to just 10 minutes plus they gained the ability to use the MP for deeper warehouse staging operations. The pilot program results projected over \$100 million in savings for deploying Vaux MPs across their 20 distribution centers.

MP 96" with Decking System

The decking system is supported by the MP 96" base and allows for unlimited cargo configurations and stacking solutions.

- Makes unstackable freight stackable
- Post pockets accommodate the placement of posts to support tables and secure freight
- Multiple height locations and three bays for decking table placement means thousands of options for load design



Dimensions (raised post extensions)	26' x 96" x 103"
Weight (MP Base)	3,550 lbs.
Assembled Weight (as shown)	5,182 lbs.

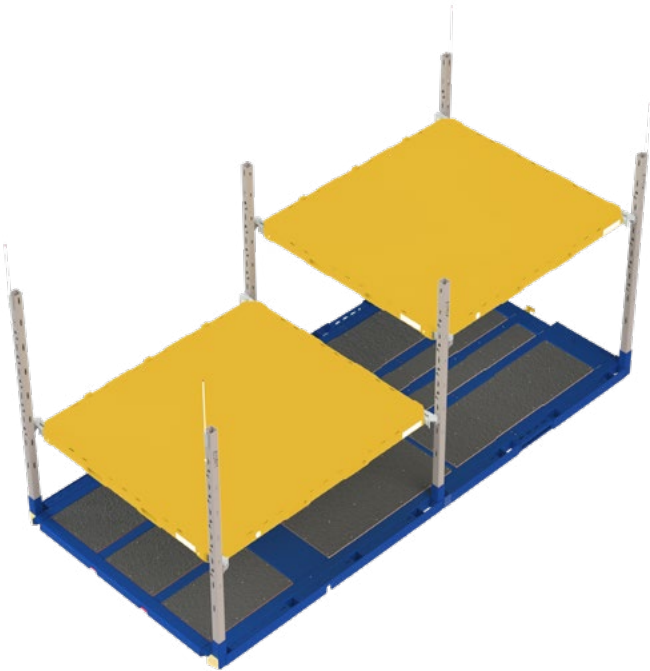


MP 96" Compact with Decking System

The 17' compact MP is designed for high maneuverability, featuring a smaller turn radius for working in tight spaces.

The roller and T-Bar system enable smooth conveyance in and out of the trailer with the MP Coupler.

- Makes unstackable freight stackable
- Six post pockets accommodate the placement of posts to support multiple tables and secure freight
- Multiple height locations and two bays for decking table placement means thousands of options for load design



Dimensions (with visual height indicators)	17' x 96" x 103"
Weight (MP Base)	2,462 lbs.
Assembled Weight (as shown)	3,990 lbs.



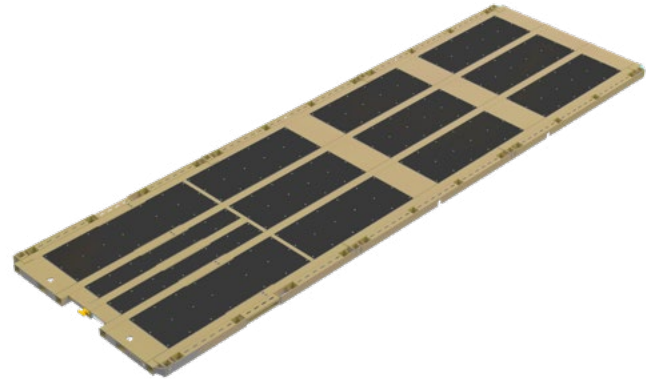
97" MP Configurations

(SWING DOOR COMPATIBLE)

MP 97"

The MP 97" is the max-width MP and ideal for automotive customers.

- Flat top, max-width for larger freight profiles
- Post pockets accommodate the optional use of posts for securement
- E-track slots around the perimeter of MP base allow for maximum securement



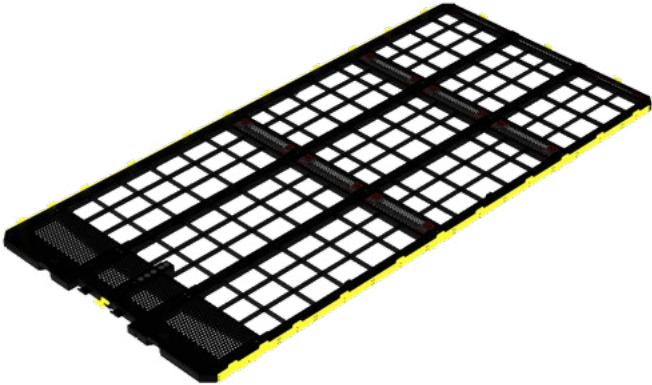
Dimensions	26' x 97" x 4"
Weight	3,500 lbs.



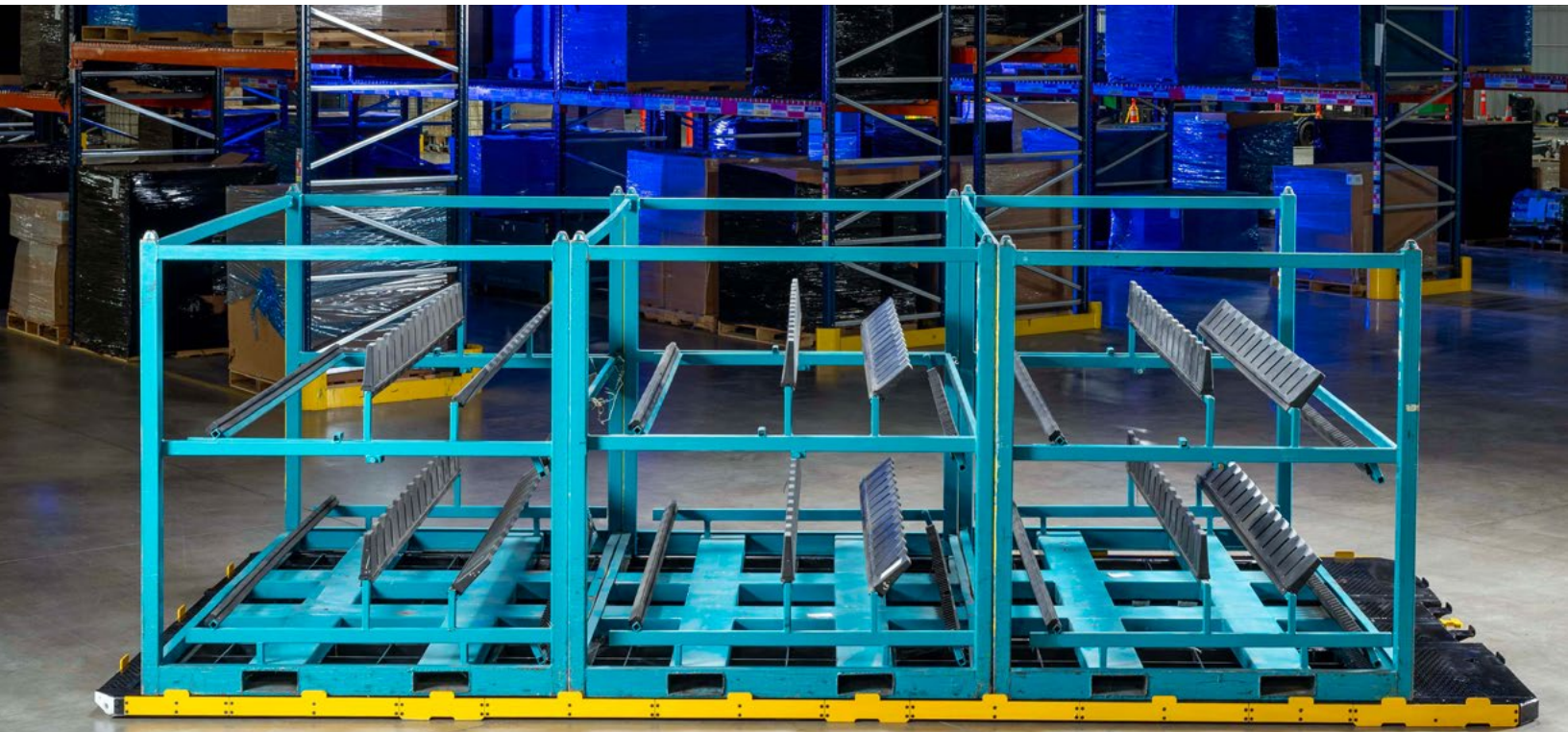
MP 97" Compact

The MP 97" Compact is more maneuverable and has a lower height profile for tight spaces.

- Ideal for automotive customers
- Flat top, max-width MP
- E-track slots around the perimeter of MP base allow for maximum securement



Dimensions	17' x 97" x 3"
Weight	2,000 lbs.



MP Accessories

Decking Tables

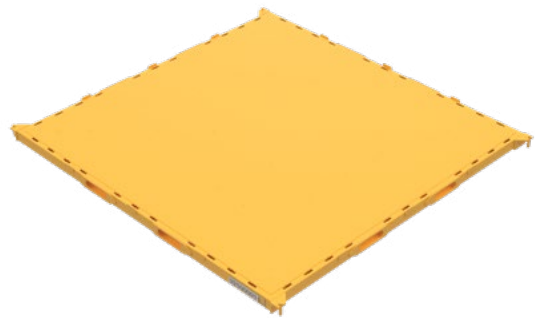
- Steel decking tables include fork pockets for adjusting height of table on posts
- E-track slots around perimeter for maximum securement options
- 4000 lb. load capacity

92" DECKING TABLE

- Corner pins fit into post cups for table height adjustment
- Compatible with posts with cups

Dimensions	91" x 90" x 3"
-------------------	----------------

Weight	550 lbs.
---------------	----------

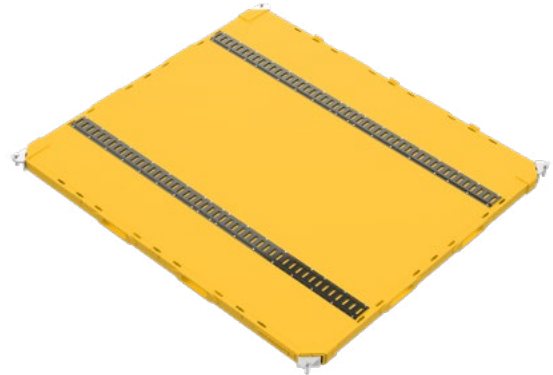


92" DECKING TABLE – UTILITY HAULER

- Feature two rows of e-track rails for maximum securement
- Compatible with posts with cups

Dimensions	98" x 88" x 3"
-------------------	----------------

Weight	625 lbs. each
---------------	---------------

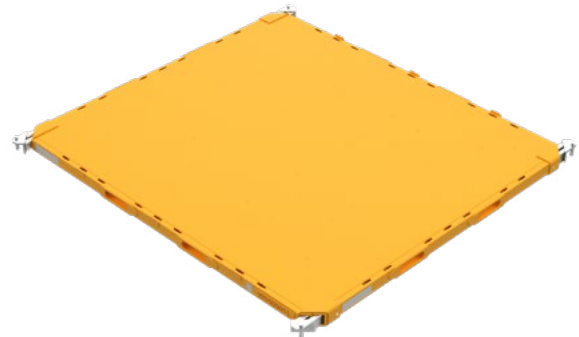


96" DECKING TABLE

- Compatible with the MP 96"
- Compatible with posts with quick change cups

Dimensions	98" x 88" x 3"
-------------------	----------------

Weight	600 lbs. each
---------------	---------------



Posts

- All posts feature e-track slots for strap and/or beam securement
- Have either post extensions or visual height indicators that show vertical height parameters
- Posts with cups support decking tables at various height levels

POST WITH CUPS

- Cups support decking tables at multiple levels
- Used with the MP 92" with Decking System

Dimensions	3" x 3" x 70.5"
Weight	60 lbs. each

POST

- Used with MP 92" Securement Only application

Dimensions	3" x 3" x 70.5"
Weight	44 lbs. each



POST WITH CUPS

POST (NO CUPS)

Posts (cont.)

POST WITH QUICK CHANGE CUPS

- Repositionable cups offer multiple height positions to support decking tables
- Used with the MP 96" with Decking System

Dimensions	3" x 3" x 70.5"
Dimensions with Visual Height Indicator (VHI) installed as shown	3" x 3" x 99"
Weight (without cups)	44 lbs. each
Weight (with cups)	50 lbs. each

SECUREMENT-ONLY POST

- Smaller profile post for MP 96" Securement Only system

Dimensions	3" x 3" x 70.5"
Dimensions with Visual Height Indicator (VHI) installed as shown	3" x 3" x 99"
Weight	35 lbs. each



POST WITH QUICK-CHANGE CUPS

SECUREMENT-ONLY POST

Securement Beams

- All beams feature e-track compatible ends

SECUREMENT BEAM – FIXED END

- Spring-loaded beams with *fixed* e-track compatible ends

Weight	10 lbs. each
Dimensions	86" x 2" x 2"



SECUREMENT BEAM – SWIVEL END

- Spring-loaded beams feature *swivel* e-track compatible ends

Weight	10 lbs. each
Dimensions	86" x 2" x 2"

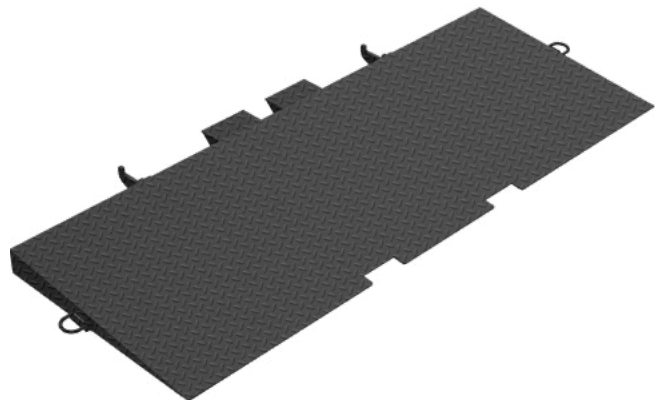


Optional Equipment

96" RAMP

- Allows forklifts to drive directly onto the surface of the MP for loading/unloading
- Compatible with the 96" MP

Weight	350 lbs.
Dimensions	96" x 36.25" x 4"



Key Terms

Beam Cart: A three-tiered cart used to store securement materials.

Caster Wheels (MP Coupler): Controlled by the “Raise” and “Lower” buttons on the MP Coupler Controller, these support the weight of the MP.

Conveyance: Refers to the movement of an MP using the MP Coupler.

Cups (posts): Attached to some post designs to support decking tables at various levels.

Decking Table: Can be raised and lowered into different positions to accommodate various freight profiles when unable to directly stack freight.

Fork Pockets (MP Coupler): The area on the MP Coupler where the forks are inserted so the guard can be closed.

Fork Pockets (decking table): Pockets are located on all four sides of the decking table, forklift blades are inserted into these pockets to raise and lower the table.

Guard (MP Coupler): Controlled by the “Guard Open” and “Guard Closed” buttons on the MP Coupler Controller, this mechanism locks the MP Coupler to the forklift when closed.

ID Plate: Numeric identifiers located on all MPs, MP Couplers and decking tables.

Mobile Platform (MP): A platform with retractable rollers offered in various widths (92", 96" and 97") and 17- or 26-foot lengths.

MP Coupler Controller: Remote used to wirelessly control the MP Coupler.

Posts: Used for supporting decking tables or for securement-only purposes.

Post Extensions: Serve as visual height indicators, marking the maximum height to which freight can be loaded on an MP as well as providing an additional measure of securement when fully extended.

Pulling Hook (MP Coupler): Utilized for both engagement and disengagement of the MP's T-Bar.

Securement: Refers to the installment of beams and/or straps to prevent freight from shifting during transit.

Securement Beam: These are spring-loaded aluminum beams with fixed e-track ends used to secure freight on the MP.

Side Hook Pockets (MP): Located on the T-Bar end of the MP where Coupler side lifting hooks are inserted to lock the Coupler to the MP when upward pressure is applied.

Side Lifting Hooks (MP Coupler): When inserted into the side hook pockets of the MP, they attach and secure with upward pressure.

T-Bar (MP): The T-Bar is the connection point for the Coupler and disengages the MP Rollers for conveyance.

Trailer Securement: Using decking beams and/or straps to secure the MP into the trailer.

Vaux MP Coupler: Battery-powered mechanism designed to engage the Vaux MP and convey it to the desired location powered by a standard forklift.

Vaux MP Coupler Charger: Using a 110-volt outlet, this can be plugged into the Coupler to charge its internal batteries.

Visual Height Indicators (VHI): Used as a visual aid to represent the maximum loading height.

ArcBest[®]

Vaux



arcbest.com/vaux